

MaxiForce Collapsible Bollards

March 2020

MaxiForce Bollards
7560 Main Street
Sykesville, MD 21784

Phone 410-552-9888
Fax 410-552-9939
Email sales@maxiforcebollards.com

MAXIFORCEBOLLARDS.COM

**PRODUCT
BROCHURE**



MaxiForce

COLLAPSIBLE BOLLARDS



MaxiForce Collapsible Bollards are a super-functional, cost-effective and flexible barrier solution that allows you to control, re-route, or grant quick access to meet your traffic flow requirements.

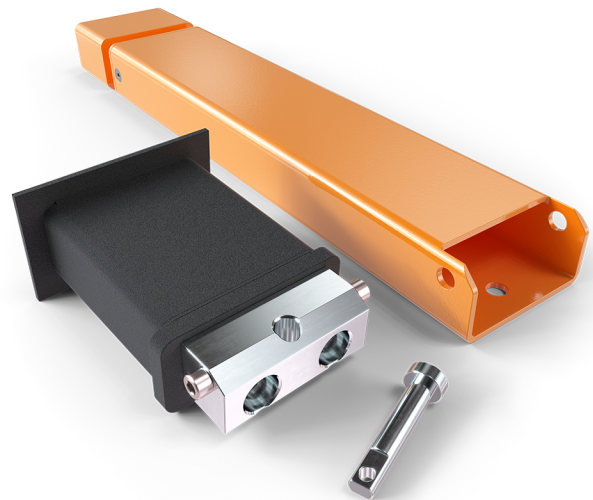
Browse our full Collapsible Product Line:
maxiforcebollards.com/product-category/collapsibles

AHJ
Approved



FEATURES

- ✓ The fastest emergency ingress solution available on the market when life safety matters
- ✓ Approved for firelane use in many cities, townships, and municipalities by the local AHJ*
- ✓ The patented breakaway feature allows emergency access without damaging the bollard or the vehicle
- ✓ Can be manually unlocked and folded down quickly by a padlock or by a wrench
- ✓ Once collapsed the bollard body requires only 3-5/8" clearance to allow vehicles to pass over the bollard
- ✓ Can be easily returned to original locked position without the need for tools
- ✓ Bollards can be pushed over from any angle
- ✓ Bollard body can be removed leaving a flush surface that won't catch on equipment such as street sweepers or snow plows
- ✓ Two base types for versatile installation
- ✓ Available in a wide selection of powder coat colors and finishes



*Authority Having Jurisdiction

All MaxiForce Collapsible Bollards feature the unique and patented breakaway system allowing emergency first responder vehicles to push the unit over when life safety situations arise, saving valuable response time. The breakaway system works by allowing the unit to "breakaway" from the base, permitting quick access without using the wrench operation (also patented) or removing a padlock. Two unique inserts are designed to shear when the bollard is pushed over by a vehicle. This gives the vehicle access without causing significant damage to the bollard or vehicle. By replacing the inexpensive inserts, the bollard can be placed back into service quickly by the use of a standard Allen wrench.

EASY OPERATION



Patented Hydrant-Wrench Operated Bollard

Ideal for locations requiring traffic control while allowing designated vehicles to pass quickly with the use of a fire hydrant wrench. The standard hydrant nut is a 5-sided AWWA nut, which matches fire hydrant wrenches carried by most first responders. (Other nut styles are available.)



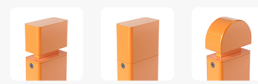
Standard Padlock Operated Bollard

Ideal for designated locations where traffic control is required and only authorized vehicles and personnel with the appropriate key may unlock the bollard and pass through.



Two Base Types

MaxiForce Collapsible Bollards have two base options to fit installation requirements. Collapsible bollard operation is not affected by the choice of the base type.



Choice of Head Styles

MaxiForce Bollards have several style options, including a choice of head styles to top the bollard bodies. All three bollard head styles are removable and interchangeable. All heads attach to the bollard body mechanically.

Easy Installation

Footings are engineered for easy installation taking advantage of standard sized augers and heavy equipment buckets.



Patented Breakaway Feature

MaxiForce's patented breakaway insert is a distinctive feature allowing emergency and safety personnel immediate access beyond the bollard without leaving the vehicle, saving valuable response time. It works by allowing the unit to "breakaway" from the base, permitting access without using the wrench operation or removing the padlock.

TYPICAL APPLICATIONS

- Fire lanes & alleyways
- Emergency entrances
- Bike trails & trailheads
- Office buildings
- School grounds
- College campuses
- Playgrounds & parks
- Parking areas
- Government & military installations
- Hospitals & health facilities
- Malls & shopping centers
- Residential subdivisions
- BallParks & stadiums
- Apartment complexes
- Pedestrian walkways
- City downtown areas

SIZES

Standard Height: 32" above finished surface

MaxiForce Collapsible Bollards are available in custom sizes according to your needs.

For more information about custom orders, please contact us at:

sales@maxiforcebollards.com

STANDARD COLORS

High-Reflective White	Anodized Silver	Haze Grey OGF
Safety Yellow	Roman Bronze Matte	Bengal Black Glossy
Black Semigloss	Black Matte	Black Fine Texture

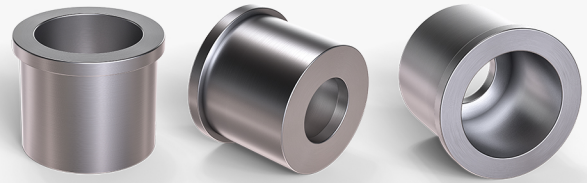
For a full listing of our standard colors, and a look at other color options, please check our current catalog or visit our website:

MAXIFORCEBOLLARDS.COM



MAXIFORCE COLLAPSIBLE BOLLARD RELEASE INSERTS

MaxiForce collapsible bollard release inserts are available in four versions: standard, heavy-duty, steel, and non-breakaway. These various inserts provide you with choices to suit the operational needs and the particular conditions of your location. All MaxiForce collapsible bollards come equipped with your choice of release inserts, and the inserts are also available for purchase separately, as replacement parts.



Standard Insert **P-145**

The standard insert is an aluminum insert that allows the unit to breakaway in lieu of damaging the bollard. This is the standard release insert provided with a MaxiForce collapsible bollard if no other type is requested.

Heavy-Duty Insert **P-150**

The heavy-duty insert is a heavier aluminum insert that allows the unit to breakaway in lieu of damaging the bollard. This insert is designed to offer more resistance than the standard insert, making it more difficult to breakaway.

Steel Insert **P-151**

The steel insert requires a more substantial force to breakaway the unit than the two aluminum inserts.

Non-Breakaway Insert **P-152**

The non-breakaway insert is a steel insert, which removes the breakaway capability of the bollard and will likely cause damage to both the bollard and the vehicle if struck.

Warranty Conditions

MaxiForce warrants that the products sold with this catalog will conform to the applicable specifications and will be free from defects in material and workmanship **for one (1) year after shipment FOB** under normal and proper use and service. For full warranty conditions and warranty limitations, please visit www.maxiforcebollards.com/resources

Technical Drawings & Specifications

All of our technical documentation and drawings are available for download on www.maxiforcebollards.com/resources. Visit our online resource library by following the link above or simply scan this QR code to access our documentation.



Ordering

To place an order with MaxiForce, please use our online order form at www.maxiforcebollards.com or contact us at sales@maxiforcebollards.com or **+1 (410) 552 9888**

Additional Information

Should you have any questions or need advice, don't hesitate to contact us at:
sales@maxiforcebollards.com or **+1 (410) 552 9888**