

# MaxiForce Fixed Bollards

November 2024

---

MaxiForce Bollards  
7560 Main Street  
Sykesville, MD 21784

---

Phone 410-552-9888  
Fax 410-552-9939  
Email [sales@maxiforcebollards.com](mailto:sales@maxiforcebollards.com)

# PRODUCT BROCHURE

MAXIFORCEBOLLARDS.COM



MaxiForce

# FIXED BOLLARDS

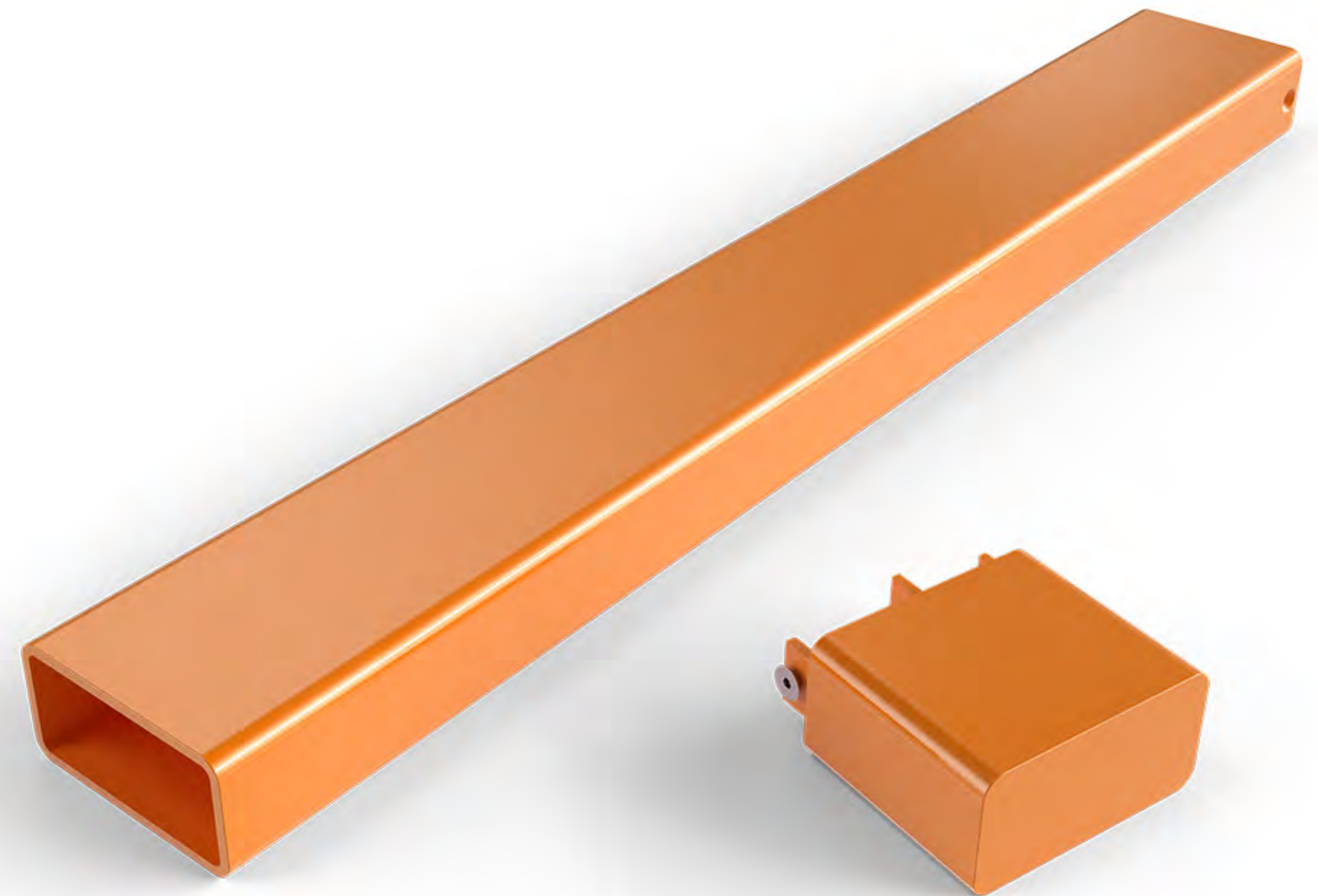
MaxiForce Fixed Bollards are an extremely durable, cost-effective bollard solution that complements our Collapsible, Light Removable, and Standard Removable Bollards perfectly.

Browse our full Fixed Product Line:  
[maxiforcebollards.com/product-category/fixed](https://maxiforcebollards.com/product-category/fixed)



## FEATURES

- ✓ The best of bollard durability and design
- ✓ Durable, fixed body, engineered to meet a variety of crash and impact ratings
- ✓ Available in diameters from 3" through 10"
- ✓ Wide variety of styles and colors to match all other MaxiForce bollard lines
- ✓ Concrete reinforceable, for additional weight and strength
- ✓ Ten different head style options
- ✓ Custom lengths, materials, and wall thicknesses available upon request
- ✓ Available in a wide selection of powder coat colors and finishes



The design of an optimal traffic control point often requires a mixture of different bollard types. Hence, MaxiForce Fixed Bollards are designed and manufactured to match the aesthetics of all other MaxiForce Bollard lines. This ensures that designers have the ability to create a uniform appearance at all passages and roadways. MaxiForce Fixed Bollards can also be used where permanent traffic control is required. The removable tops also allow these units to be filled with concrete to increase their weight and strength, while maintaining a finished appearance.

## CONVENIENT INSTALLATION

### Standard Fixed Installation

MaxiForce Fixed Bollards are produced as single, factory-complete units that are delivered completely assembled. The fixed bollards are installed directly into the ground without the need for a mounting base.

### Concrete Reinforced Installation

Some MaxiForce Fixed Bollard head options are removable, allowing the units to be concrete-filled for additional weight and strength when the installation calls for it. Once filled, the bollard heads can be reinstalled, covering the concrete filling and restoring the bollard's original aesthetics.

## Easy Installation

MaxiForce Fixed Bollards do not require the use of bases for installation purposes. The MaxiForce Fixed Bollards are installed directly into a concrete foundation.



## Multiple Head Styles

The MaxiForce Fixed line of bollards offers ten head style options: seven head styles for the round body bollards and three head styles for the rectangular body bollards, as shown. Head styles are available in bolt on and welded on styles. All bolt on styles are removable and interchangeable. *\*Note: Head style options vary based on bollard diameter.*

## Durable Fixed Body

All MaxiForce Fixed Bollards feature a durable, fixed body that is engineered and manufactured to last. Bollard bodies are available in rectangular shape, and in round sizes ranging from 3" up to 10". Custom lengths and wall thicknesses are available upon request.



## Wide Variety

MaxiForce Fixed Bollards offer numerous customization options – from the shape and size of the body to the color and final finish of the bollard.

## TYPICAL APPLICATIONS

- Crowd or building protection
- Storefronts
- Sidewalks
- Permanent utility protection
- Office buildings
- Educational facilities
- Playgrounds & parks
- Military & Government facility
- Permanent road closures
- Commercial buildings
- Parking areas
- Malls & shopping centers
- Residential subdivisions
- Ball parks & stadiums
- Apartment complexes
- Biking trails
- City downtown areas

## SIZES

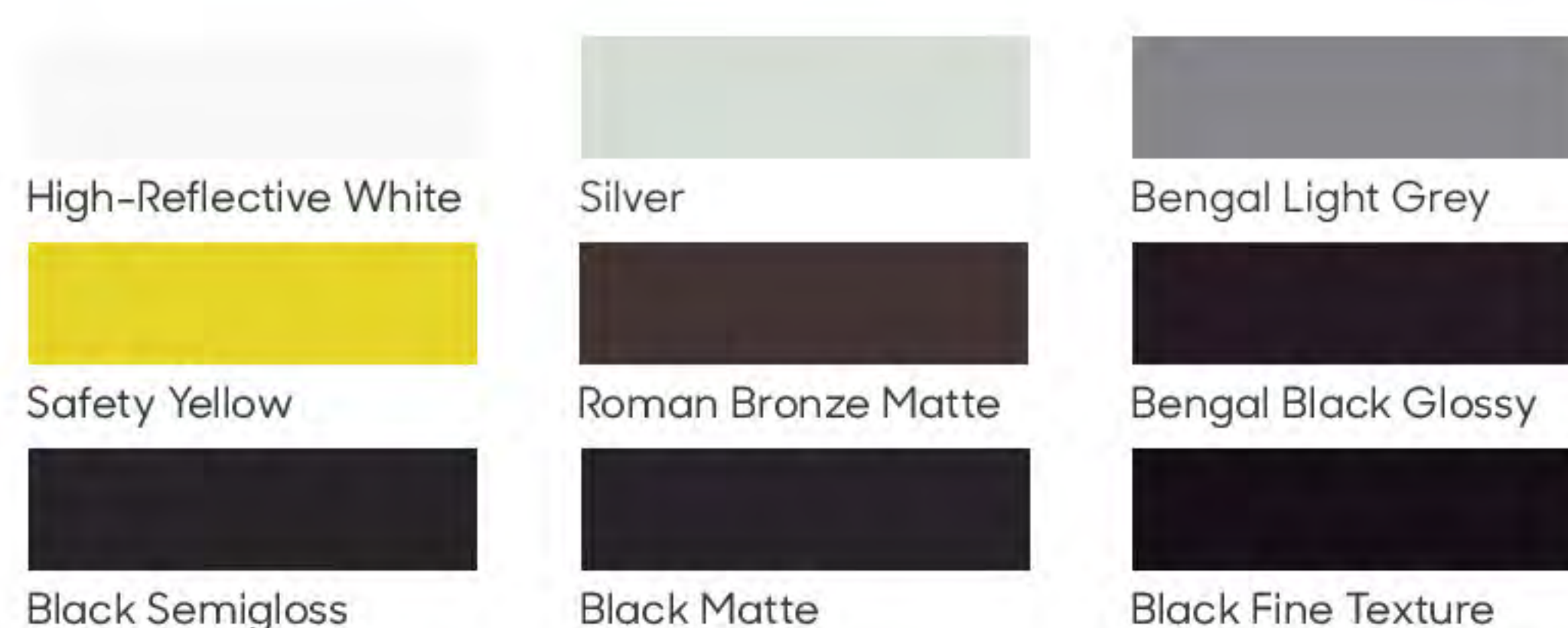
**Rectangular Fixed Bollard Standard Height: 32"** above finished surface

**Round Fixed Bollard Body Standard Height: 36"** above finished surface (head styles add additional height)

MaxiForce Fixed Bollards are available in custom sizes according to your needs. For more information about custom orders, please contact us at:

[sales@maxiforcebollards.com](mailto:sales@maxiforcebollards.com)

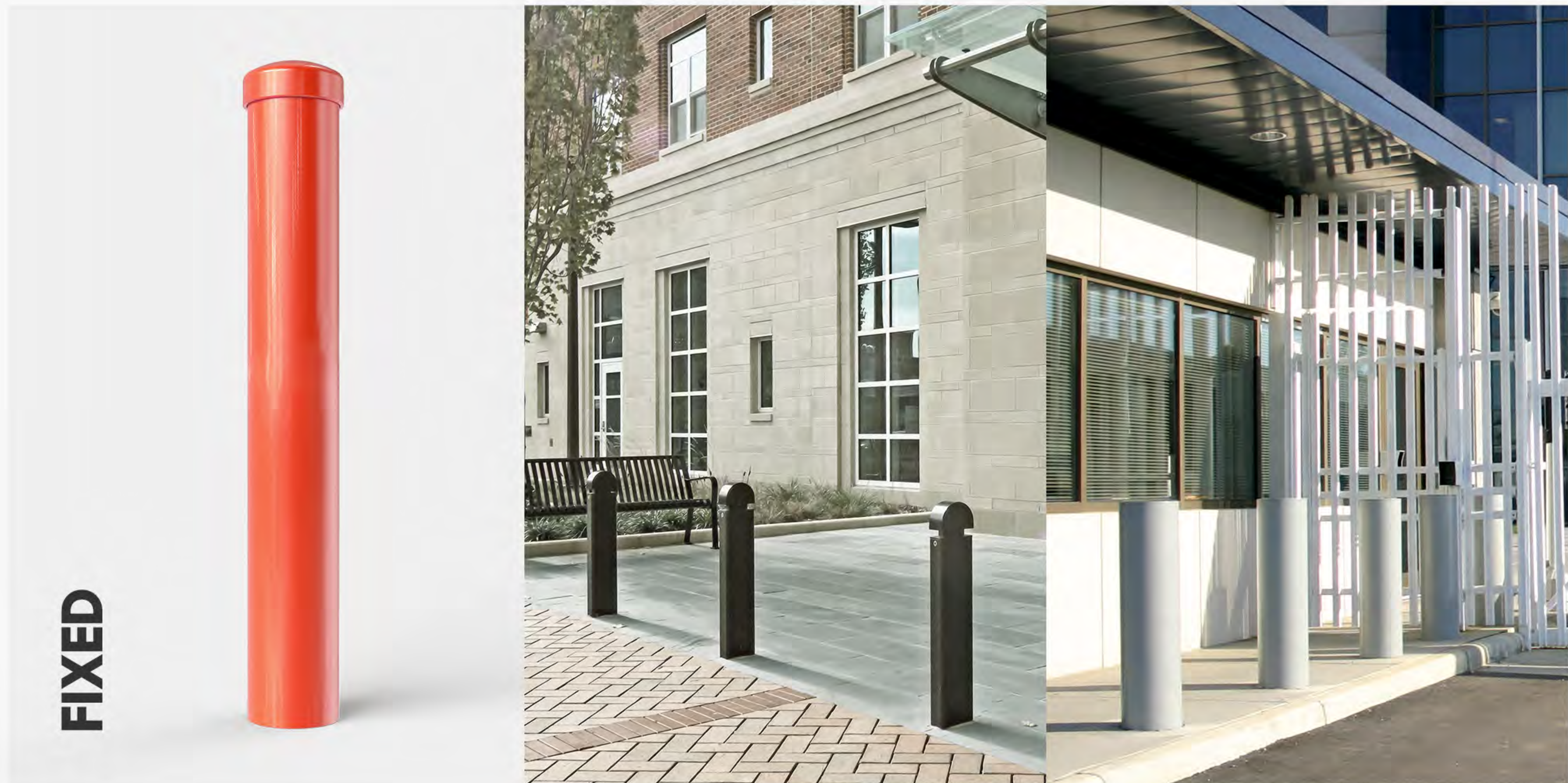
## STANDARD COLORS



For a full listing of our standard colors, and a look at other color options, please check our current catalog or visit our website:

[MAXIFORCEBOLLARDS.COM](http://MAXIFORCEBOLLARDS.COM)





## KEY BENEFITS

- ✔ Highest level of security
- ✔ Cost-effective
- ✔ No maintenance
- ✔ Great durability
- ✔ Matches operable bollard styles
- ✔ Appealing design
- ✔ Great choice of sizes, colors & finishes

## Warranty Conditions

MaxiForce warrants that the products sold with this catalog will conform to the applicable specifications and will be free from defects in material and workmanship **for one (1) year after shipment FOB** under normal and proper use and service. For full warranty conditions and warranty limitations, please visit [www.maxiforcebollards.com/resources](http://www.maxiforcebollards.com/resources)

## Technical Drawings & Specifications

All of our technical documentation and drawings are available for download on [www.maxiforcebollards.com/resources](http://www.maxiforcebollards.com/resources) Visit our online resource library by following the link above or simply scan this QR code to access our documentation.



## Ordering

To place an order with MaxiForce, please use our online order form at [www.maxiforcebollards.com](http://www.maxiforcebollards.com) or contact us at [sales@maxiforcebollards.com](mailto:sales@maxiforcebollards.com) or **+1 (410) 552 9888**

## Additional Information

Should you have any questions or need advice, don't hesitate to contact us at: [sales@maxiforcebollards.com](mailto:sales@maxiforcebollards.com) or **+1 (410) 552 9888**